



North-South Cycle Superhighway (CS6) Section 1 - Farringdon Street

North - South Cycle Superhighway continues south to Elephant & Castle (in construction)

Continued on Section 2

Stonecutter Street closed for traffic.
Area impacted by another development - not part of this consultation

Consulate parking bay

Bus stop bypass for cyclists

Loading /disabled bay

Stepped cycle track

Relocated taxi parking bay

ST. BRIDE STREET

FARRINGDON STREET

HARP ALLEY

STONECUTTER STREET

FARRINGDON STREET

OLD FLEET LANE

BEAR ALLEY

NEWCASTLE CLOSE

TURNAGAIN LANE

- Key:
- North-South Cycle Superhighway
 - Existing footway or traffic island
 - New footway or traffic island
 - Existing kerbline removed
 - Signalised pedestrian or pedestrian/cycle crossing
 - Contrasting coloured surface at informal crossing
 - Bus stop
 - New cycle parking
 - Existing road markings
 - New road markings
 - Trees
 - Development not part of consultation
 - Santander Cycle Hire docking station
 - Direction of Cycle Superhighway

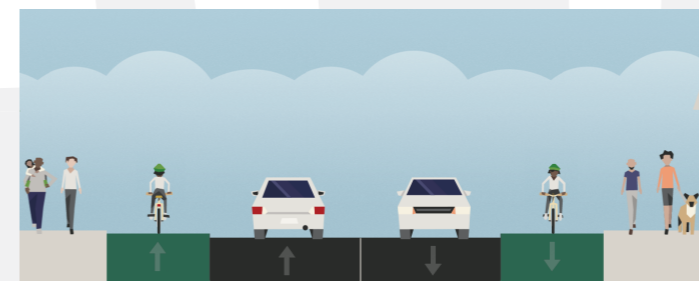
Existing loading / disabled bay

Existing taxi parking bay

Existing disabled bay

Signalised cycle crossing

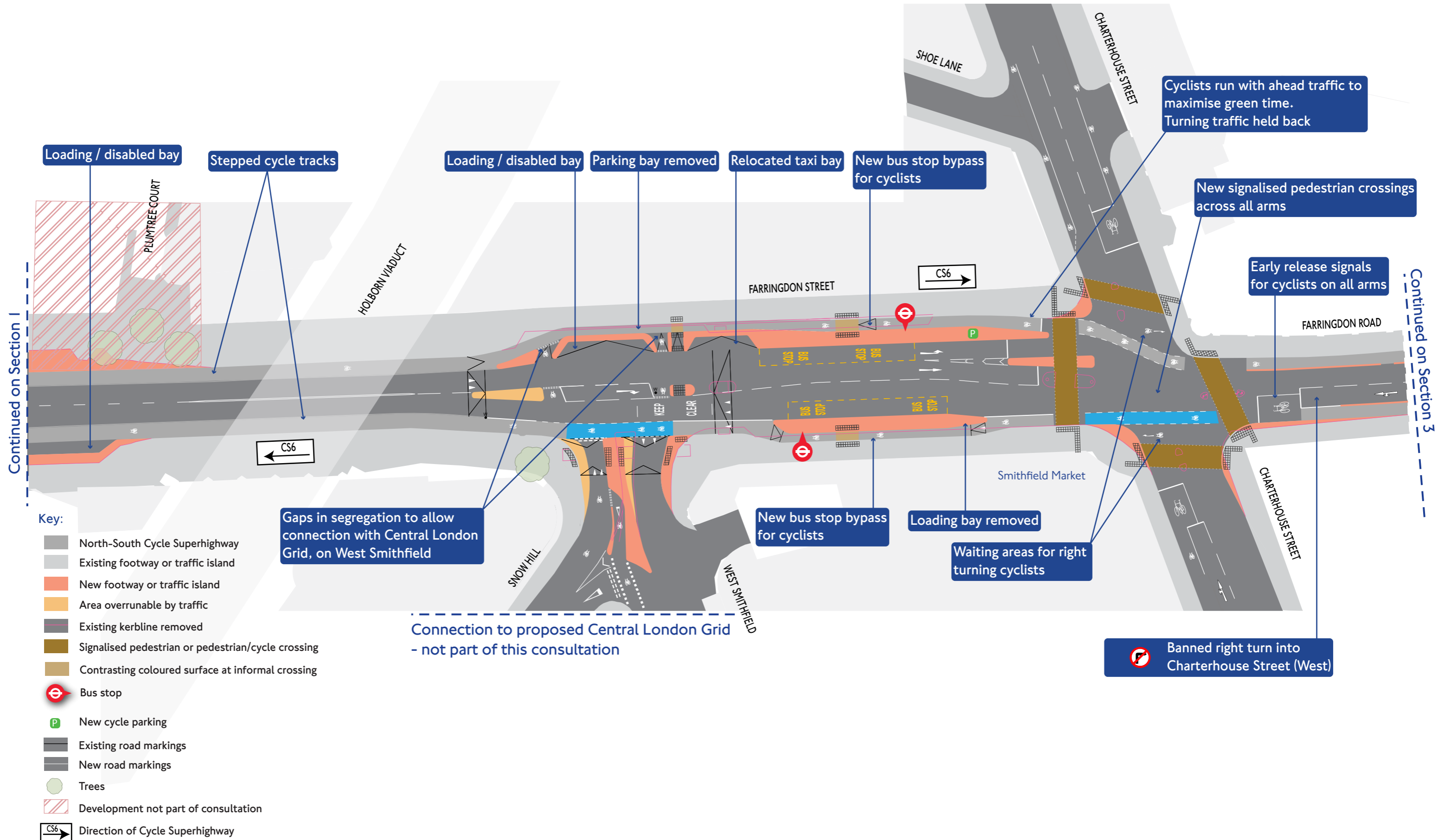
Relocated motorcycle parking



Stepped cycle track

Section A-A

North-South Cycle Superhighway (CS6) Section 2 - Farringdon Street



Key:

- North-South Cycle Superhighway
- Existing footway or traffic island
- New footway or traffic island
- Area overrunable by traffic
- Existing kerbline removed
- Signalised pedestrian or pedestrian/cycle crossing
- Contrasting coloured surface at informal crossing
- Bus stop
- New cycle parking
- Existing road markings
- New road markings
- Trees
- Development not part of consultation
- Direction of Cycle Superhighway

Connection to proposed Central London Grid - not part of this consultation

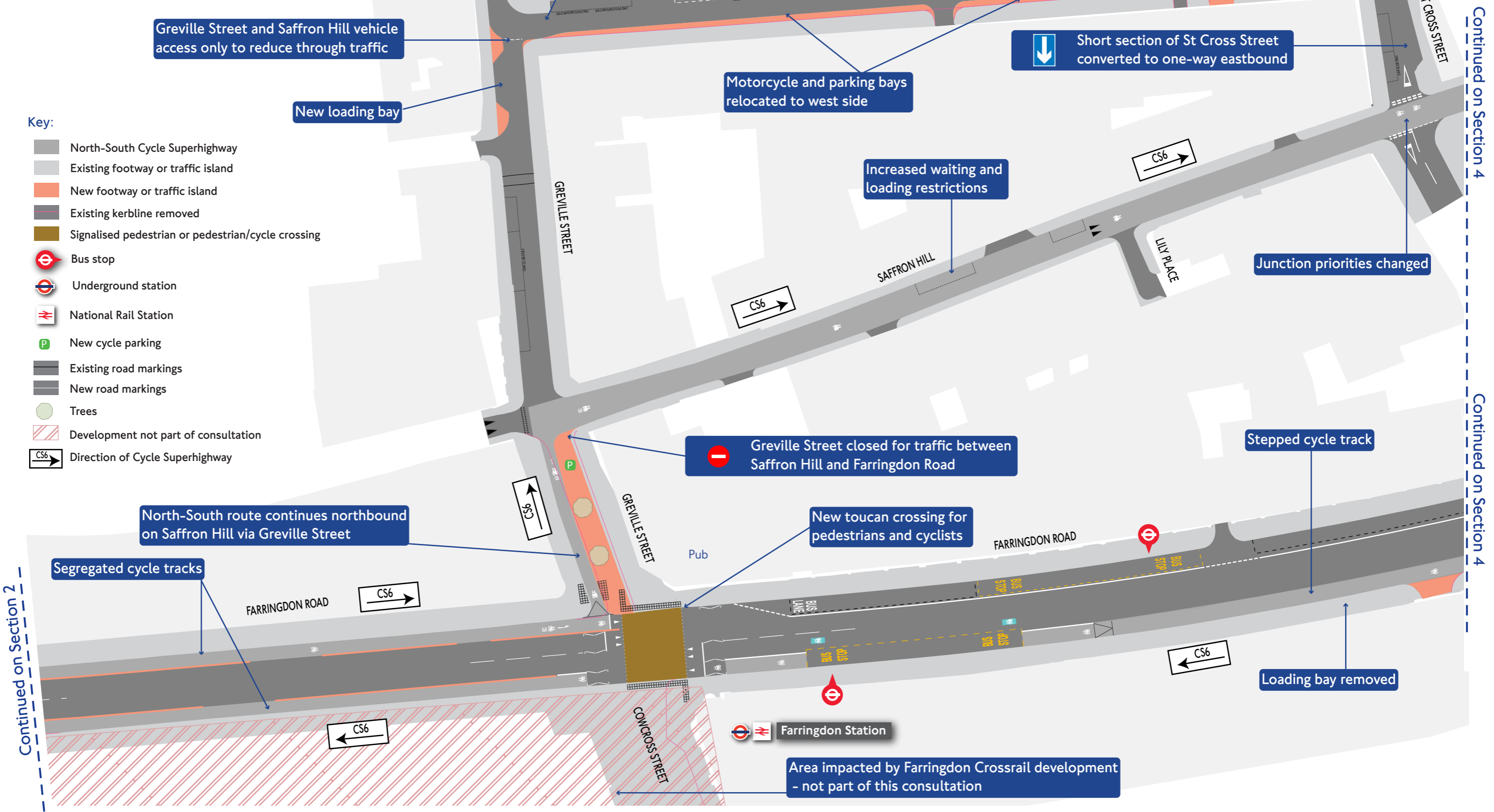
Banned right turn into Charterhouse Street (West)

North-South Cycle Superhighway (CS6) Section 3 - Farringdon Road and Saffron Hill



For detailed changes to parking, waiting and loading restrictions see accompanying text

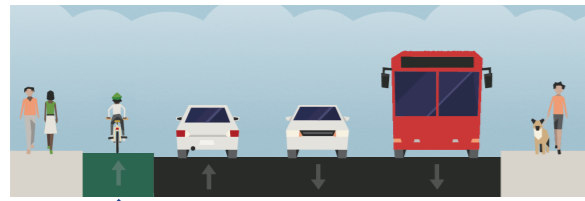
- Key:
- North-South Cycle Superhighway
 - Existing footway or traffic island
 - New footway or traffic island
 - Existing kerblines removed
 - Signalised pedestrian or pedestrian/cycle crossing
 - Bus stop
 - Underground station
 - National Rail Station
 - New cycle parking
 - Existing road markings
 - New road markings
 - Trees
 - Development not part of consultation
 - Direction of Cycle Superhighway



Continued on Section 4

Continued on Section 4

Continued on Section 2



Stepped cycle track

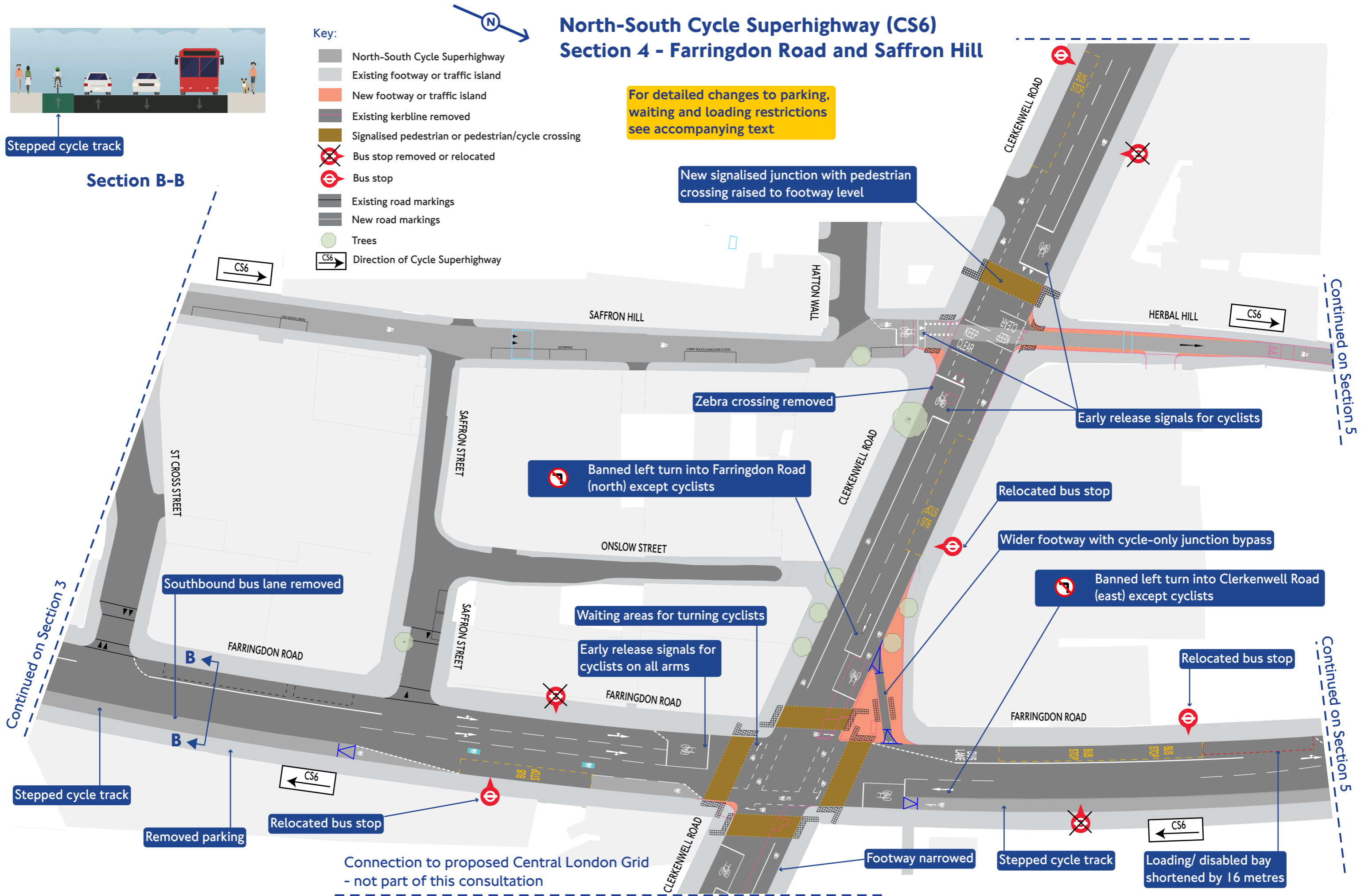
Section B-B

Key:

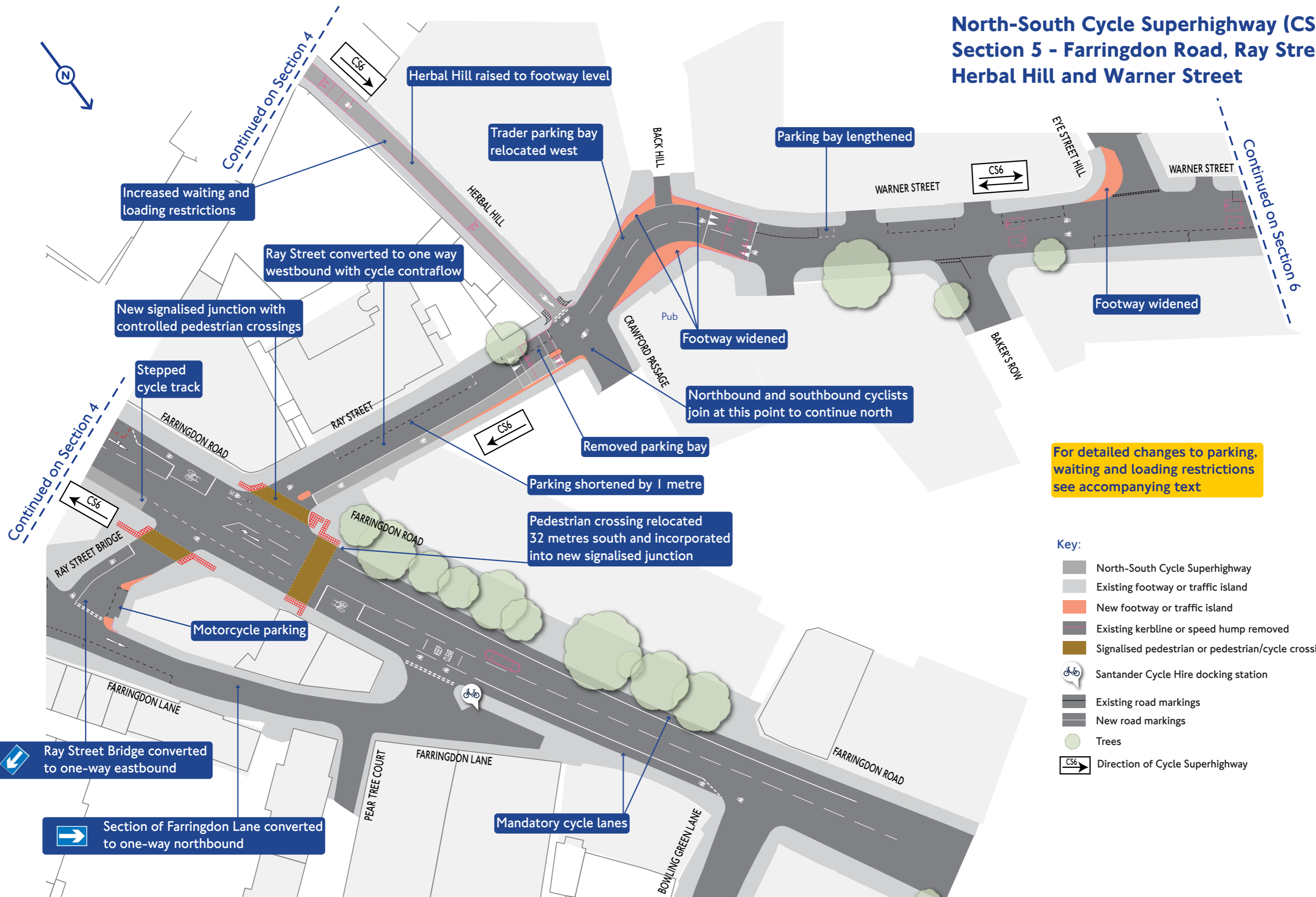
- North-South Cycle Superhighway
- Existing footway or traffic island
- New footway or traffic island
- Existing kerbline removed
- Signalised pedestrian or pedestrian/cycle crossing
- Bus stop removed or relocated
- Bus stop
- Existing road markings
- New road markings
- Trees
- Direction of Cycle Superhighway

North-South Cycle Superhighway (CS6) Section 4 - Farringdon Road and Saffron Hill

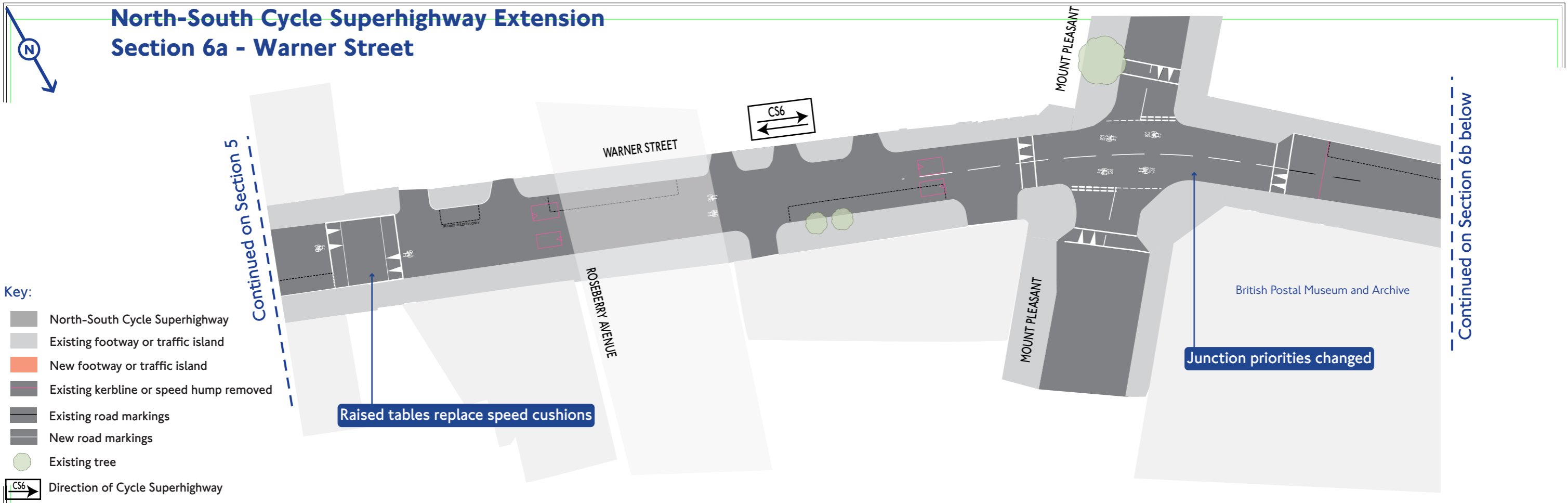
For detailed changes to parking, waiting and loading restrictions see accompanying text



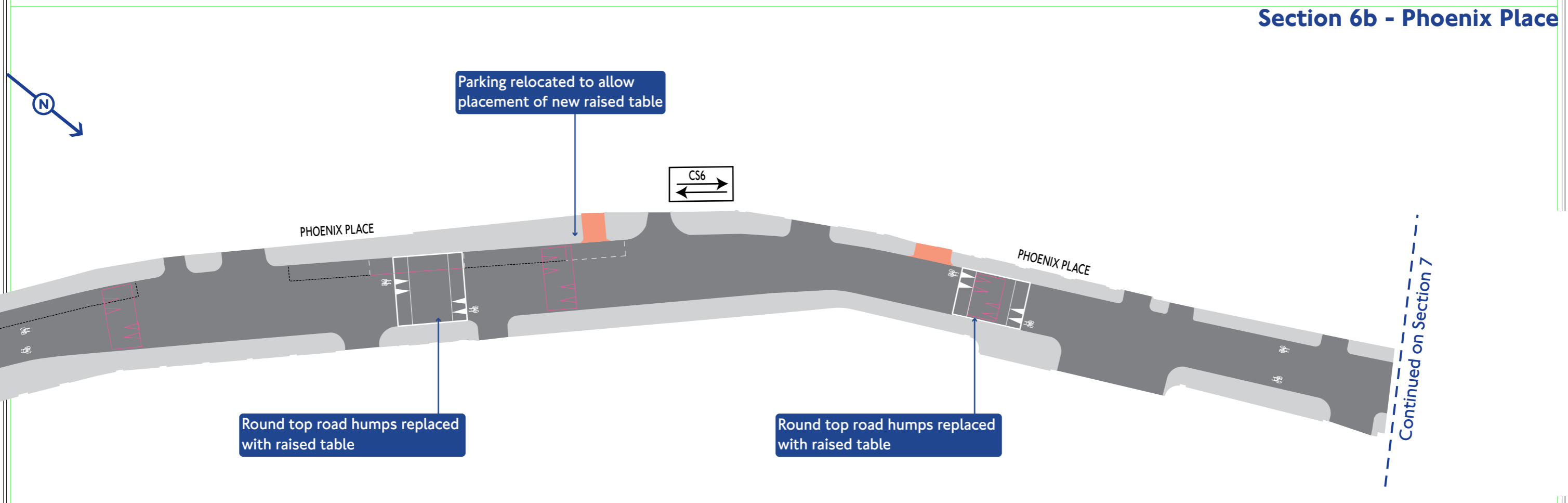
North-South Cycle Superhighway (CS6) Section 5 - Farringdon Road, Ray Street, Herbal Hill and Warner Street



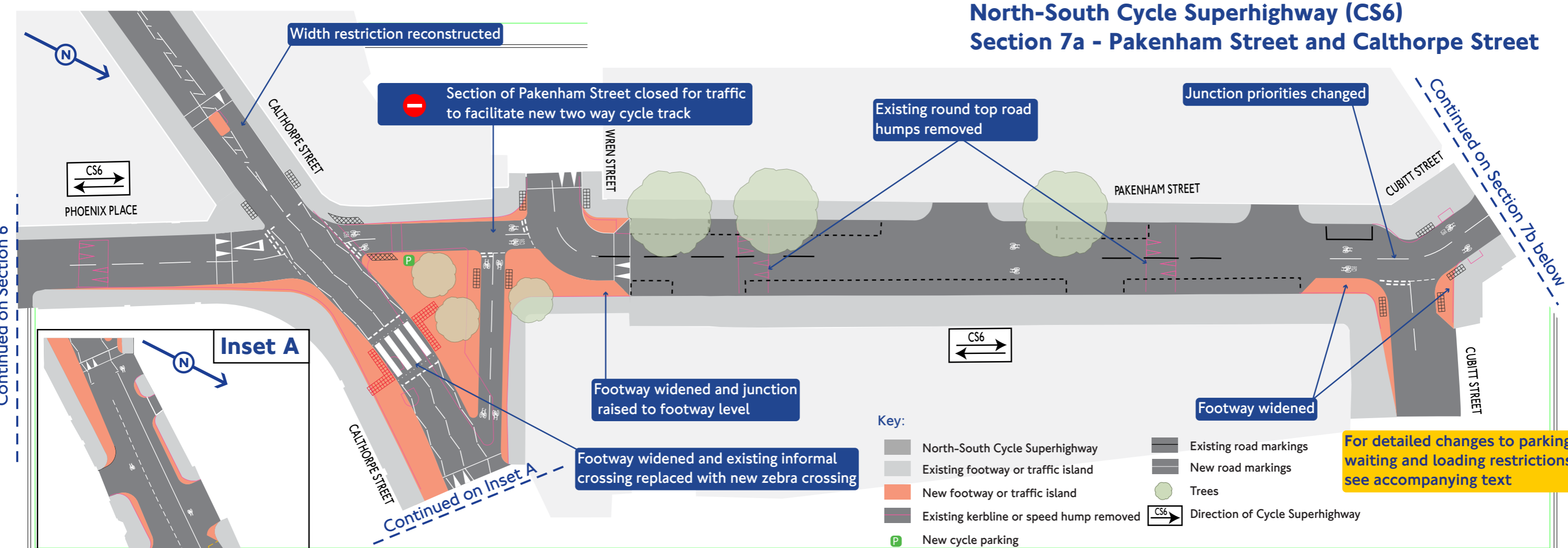
North-South Cycle Superhighway Extension Section 6a - Warner Street



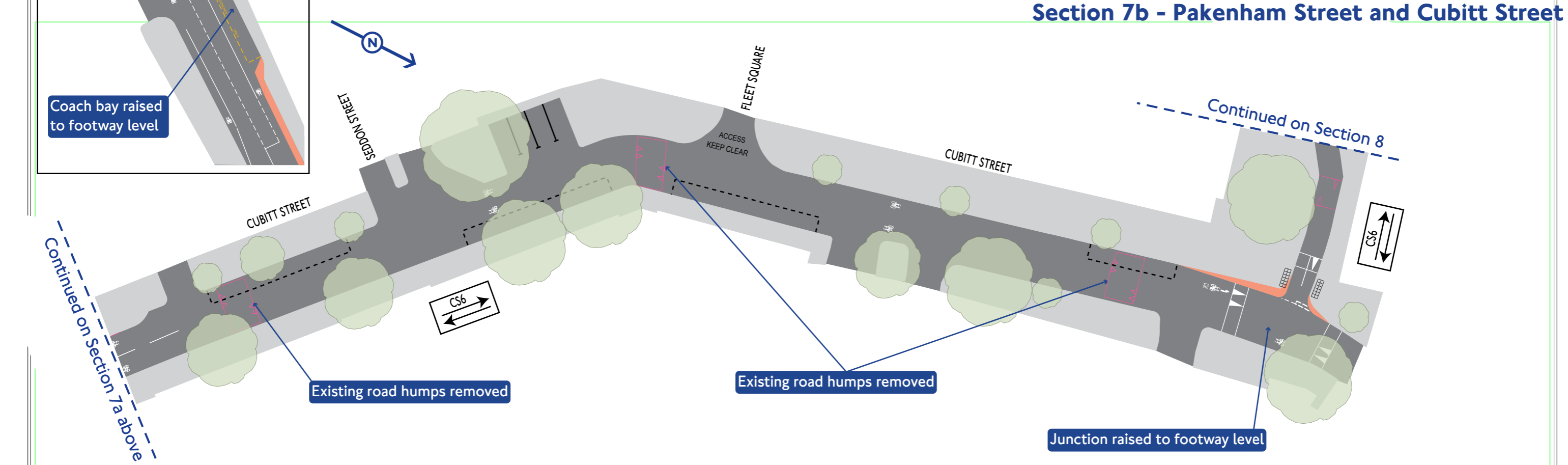
Section 6b - Phoenix Place



North-South Cycle Superhighway (CS6) Section 7a - Pakenham Street and Calthorpe Street



Section 7b - Pakenham Street and Cubitt Street

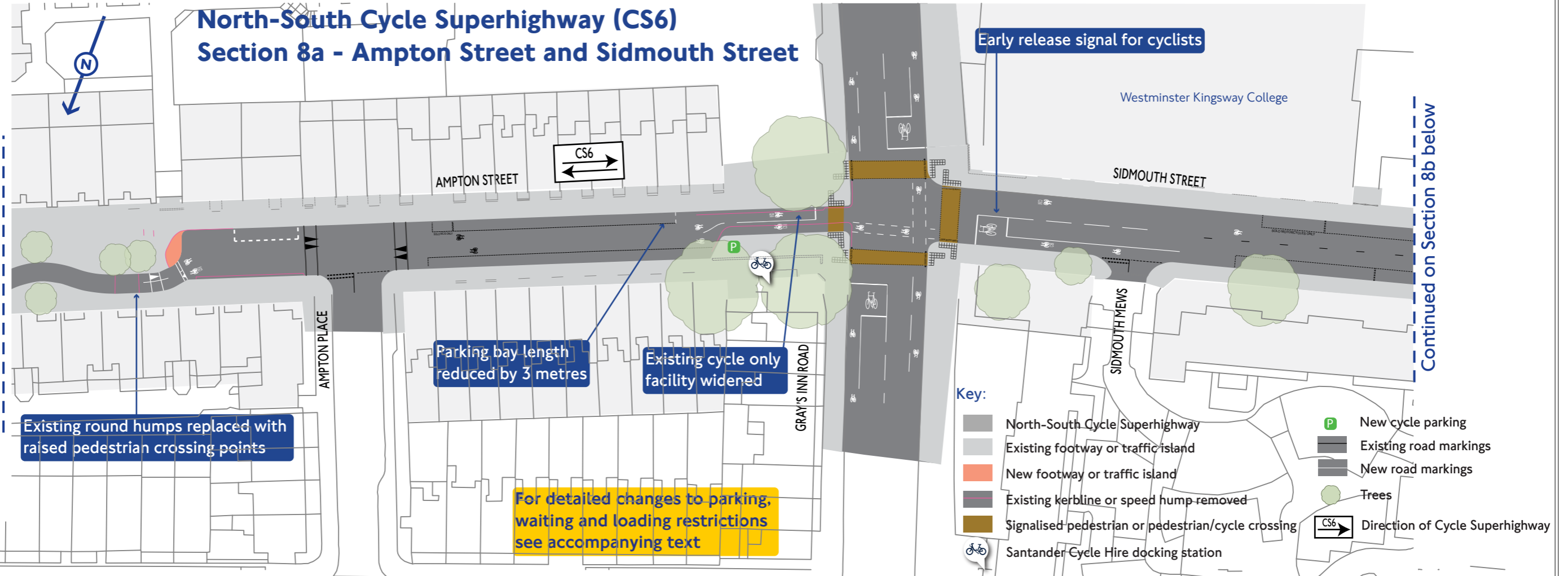


For detailed changes to parking, waiting and loading restrictions see accompanying text

North-South Cycle Superhighway (CS6) Section 8a - Ampton Street and Sidmouth Street

Continued on Section 7

Continued on Section 8b below

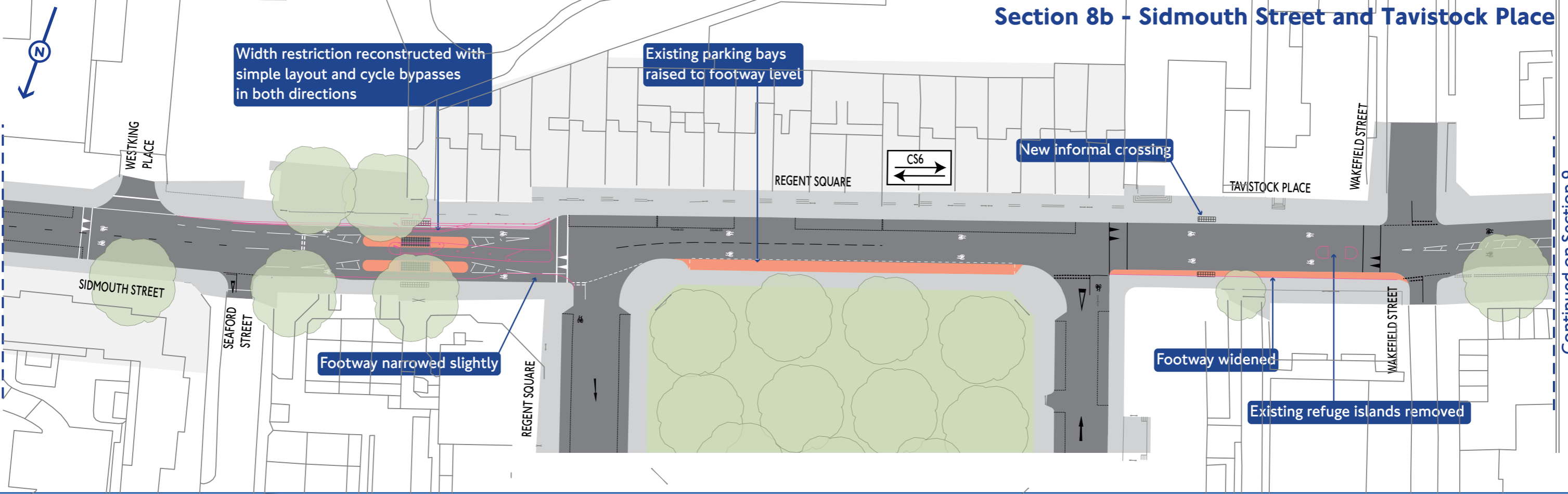


For detailed changes to parking, waiting and loading restrictions see accompanying text

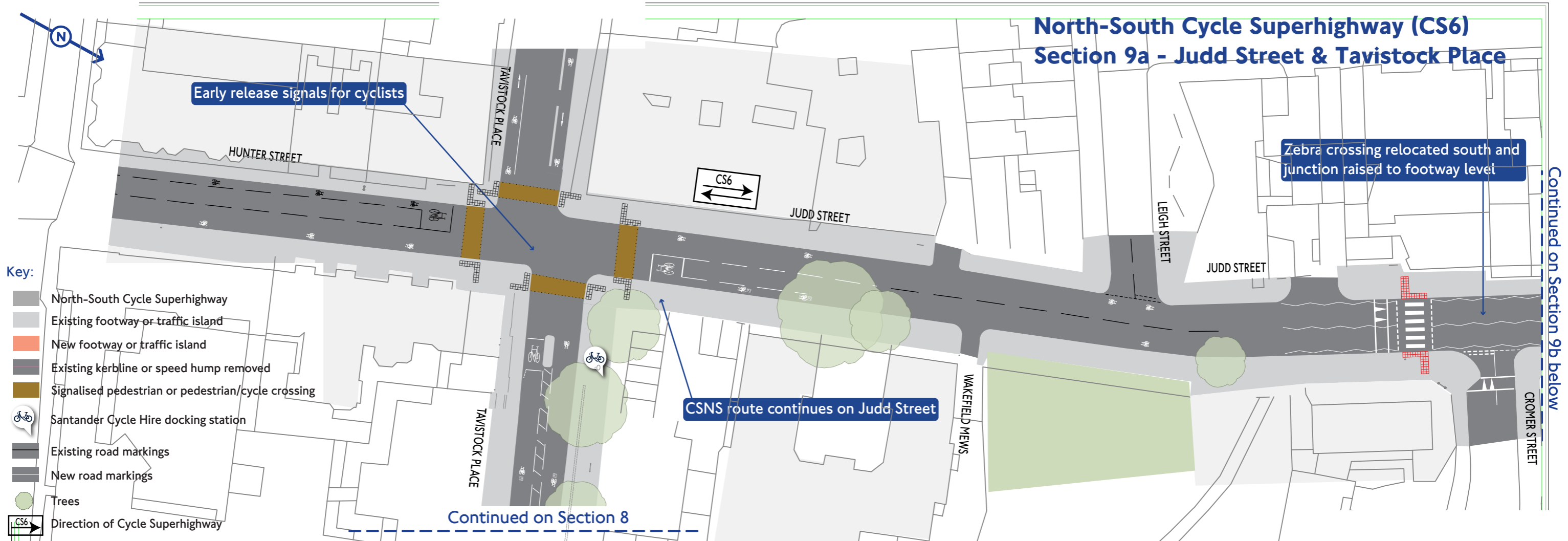
Section 8b - Sidmouth Street and Tavistock Place

Continued on Section 8a above

Continued on Section 9



North-South Cycle Superhighway (CS6) Section 9a - Judd Street & Tavistock Place



Section 9b - Judd Street

